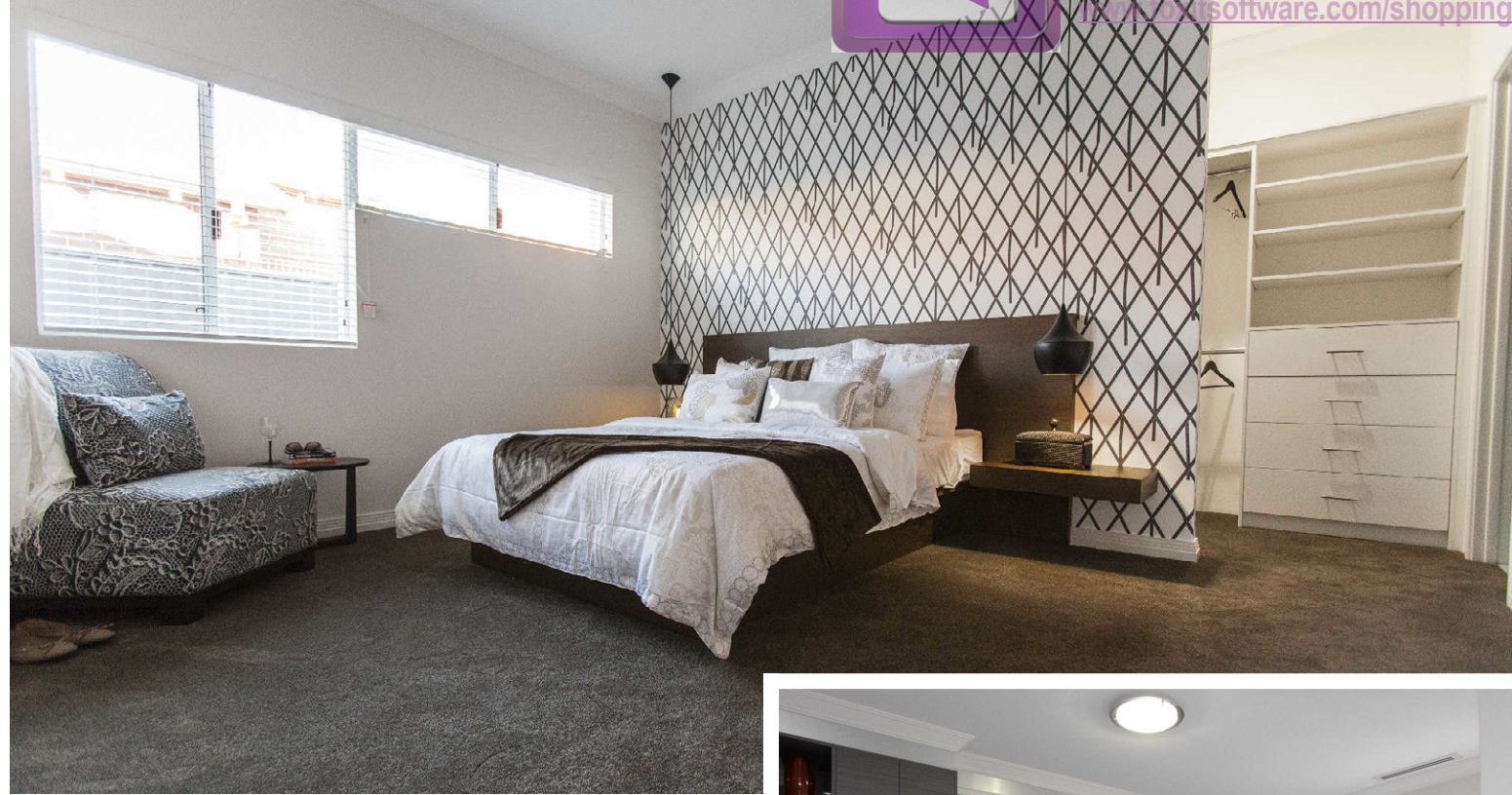


DISPLAY HOME



The design brief was to create a sustainable, energy-efficient villa. Pictures: Alan McDonald



The main suite has a big wraparound wardrobe behind the bed.

Debut design to showcase team skills

■ Gemma Nisbet

Surprisingly spacious and luxurious for a villa, the Opus, the first display home from Inspired Homes, on an infill block in Tuart Hill, was designed to demonstrate what the building company can offer its clients.

The company specialises in infill developments. Inspired Homes' managing director Vas Spaseski estimated the company had completed about 350 such projects in the past five years.

In deciding to build a home to showcase his team's abilities, Mr Spaseski said he had taken a "what you see is what you get" approach.

"The main goal in preparing the display was we intentionally wanted to showcase the standard features included in a new home by Inspired Homes," he said.

The design brief was to create a sustainable, energy-efficient villa with a functional open-plan layout which maximised the potential of the block.

This has been achieved with an 8-star

rating home which has the facilities to install a greywater recycling system and rainwater tank in the future.

From the low-maintenance front courtyard, the front door opens to a wide hallway, with a theatre off to one side. This room has a remote-control V-Lux skylight with blackout blinds — one of the few features in the home which is not part of Inspired's standard specifications (the others are the travertine floors, cedar blinds, aggregate driveway and alfresco area, and the spa bath).

On the other side of the hallway is the laundry, which is fitted out with cabinetry in a high-gloss lacquer finish, and the access to the double garage.

Behind this is the open-plan kitchen, living and dining area.

Here, clever touches include the extra-deep fridge recess to accommodate big modern fridges, Blum soft-close drawers and doors and a mirrored splashback, which adds to the feeling of space.

The open-plan area spills out to the alfresco area, which is equipped with a built-in barbecue, space for a fridge,

Quantum Quartz benchtops with a waterfall edge and a sink.

Care has also been taken to make the main suite as spacious as possible, with a big wraparound robe behind the bed and an ensuite incorporating a huge hobless

shower. There are a further three bedrooms, one of which has direct access to the bathroom, which includes a spa bath and twin vanities, and a powder room.

Mr Spaseski said the home was designed to appeal to the

investor and developer market, in line with the growing trend to demolish older homes and replace them with new villas and town houses.

Versions of the home can be built from \$215,000. It is open by appointment.

